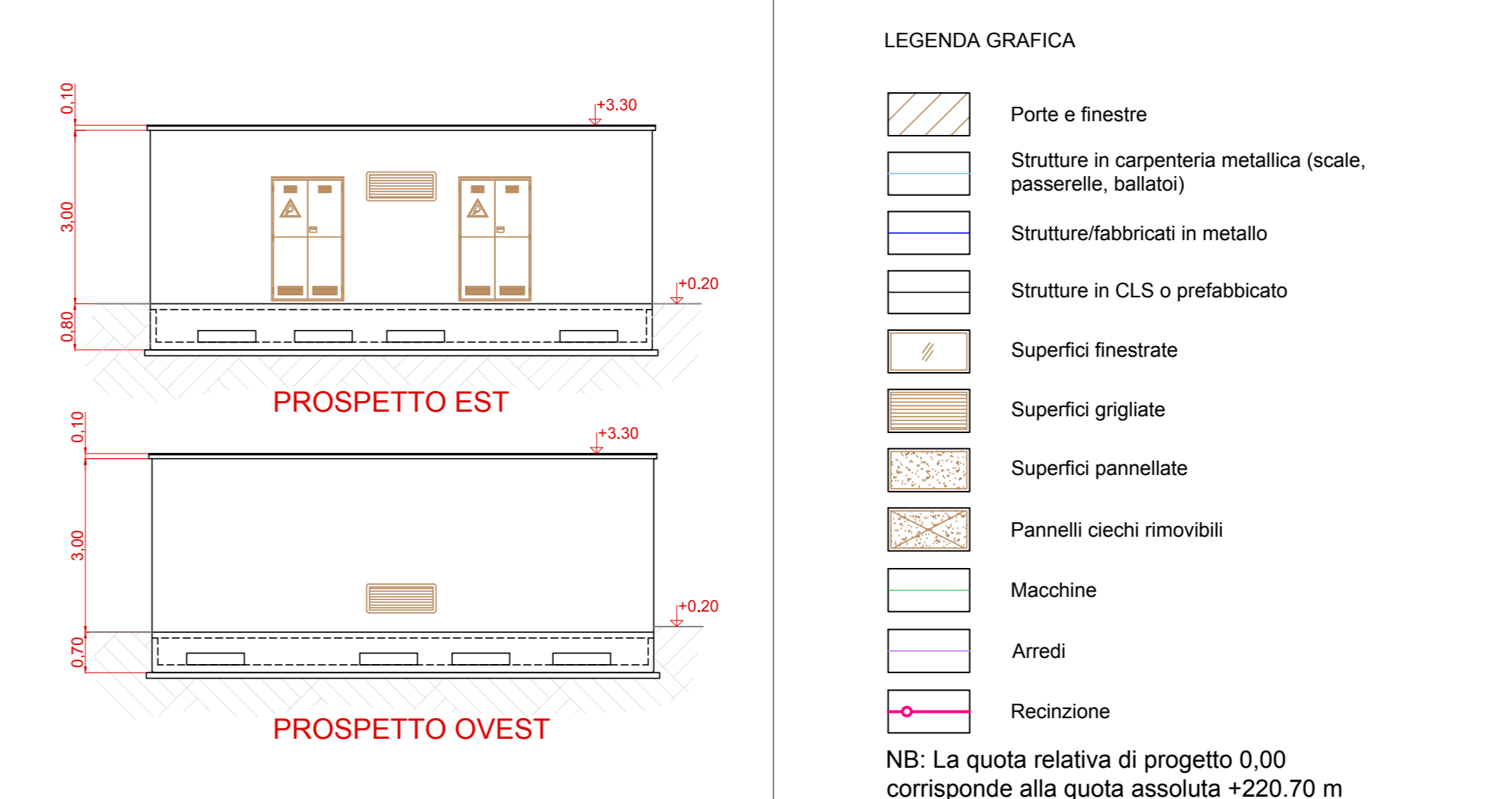
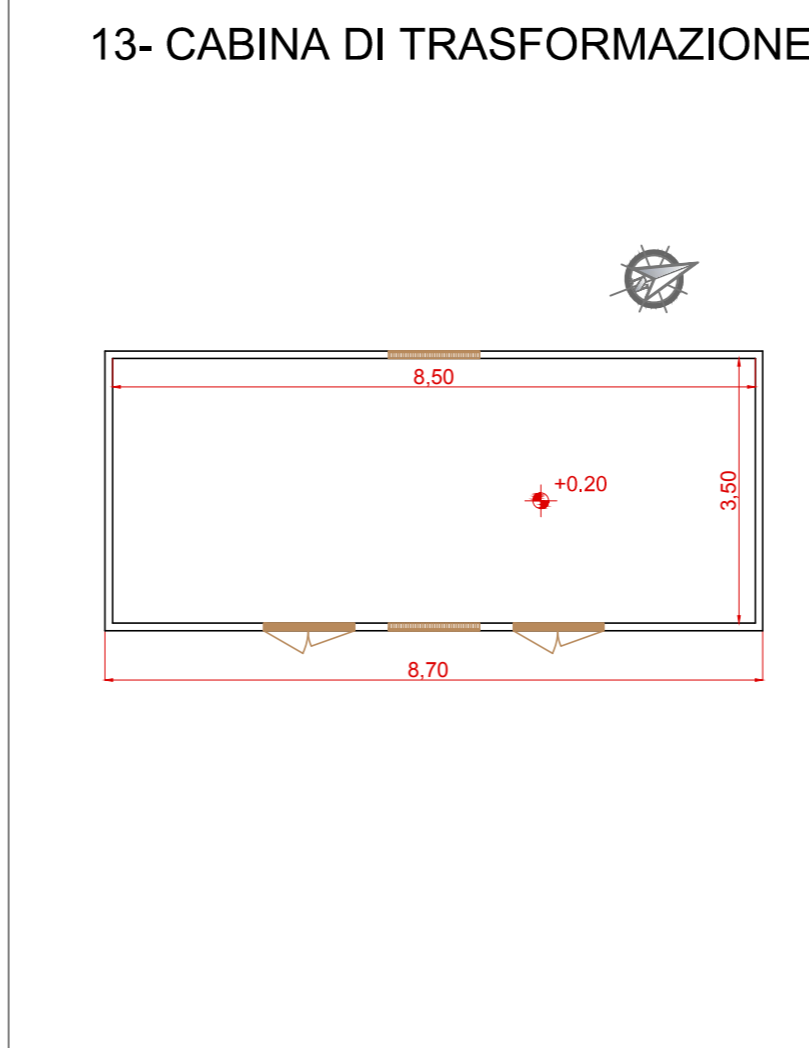
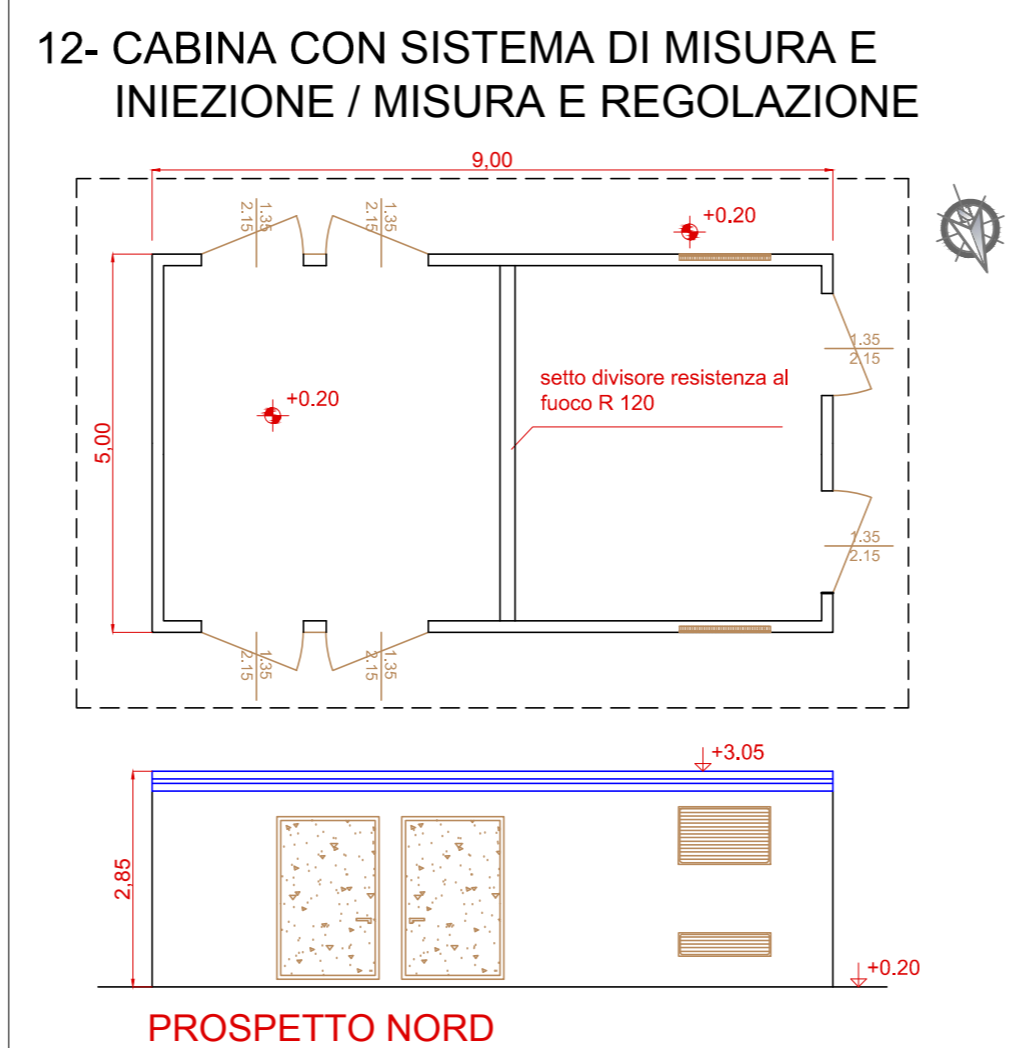
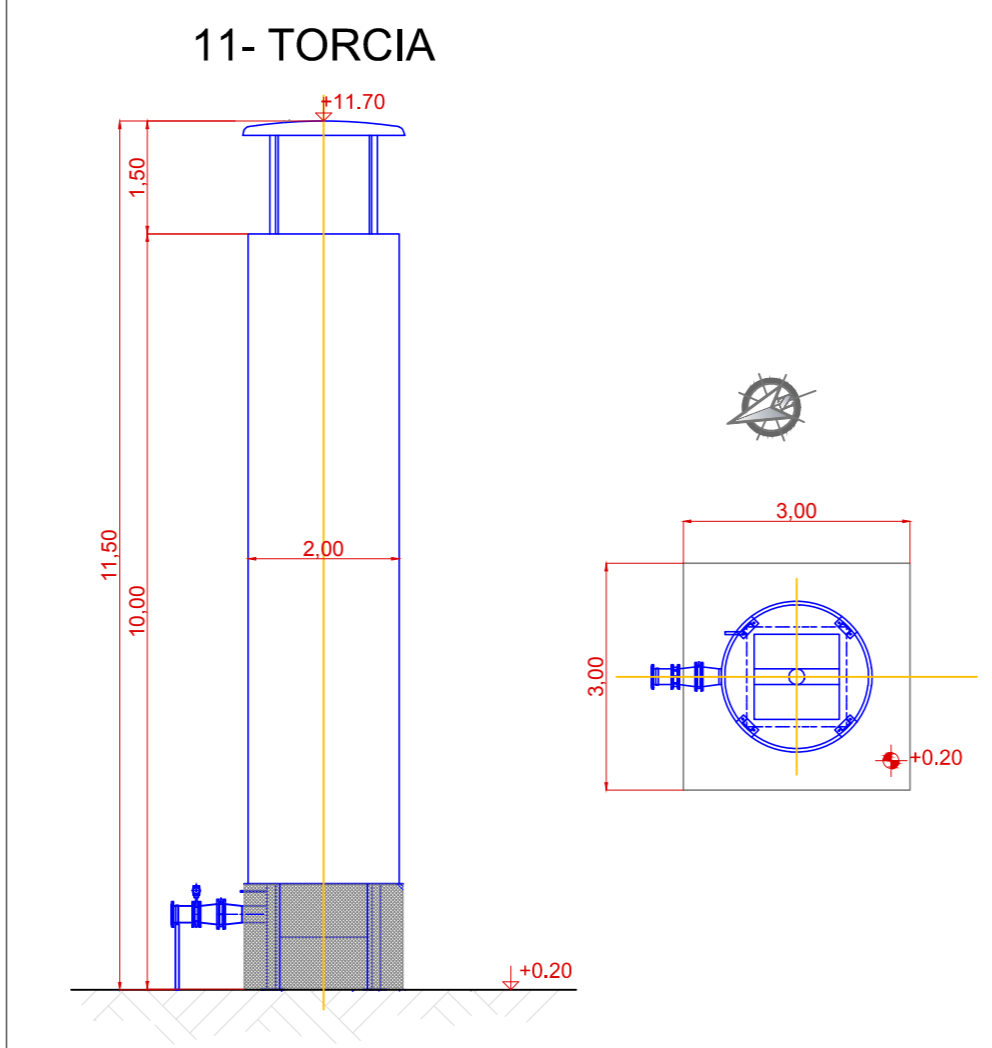
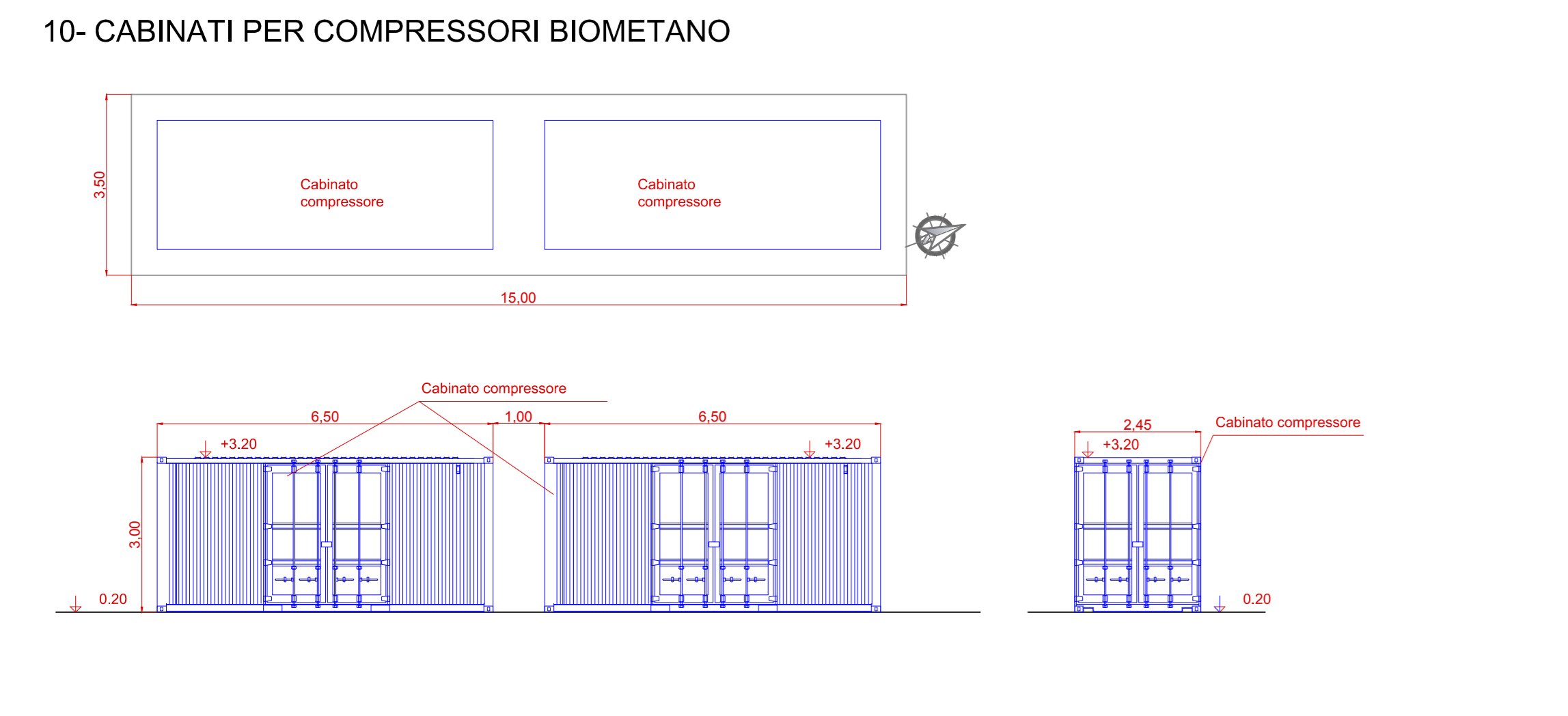
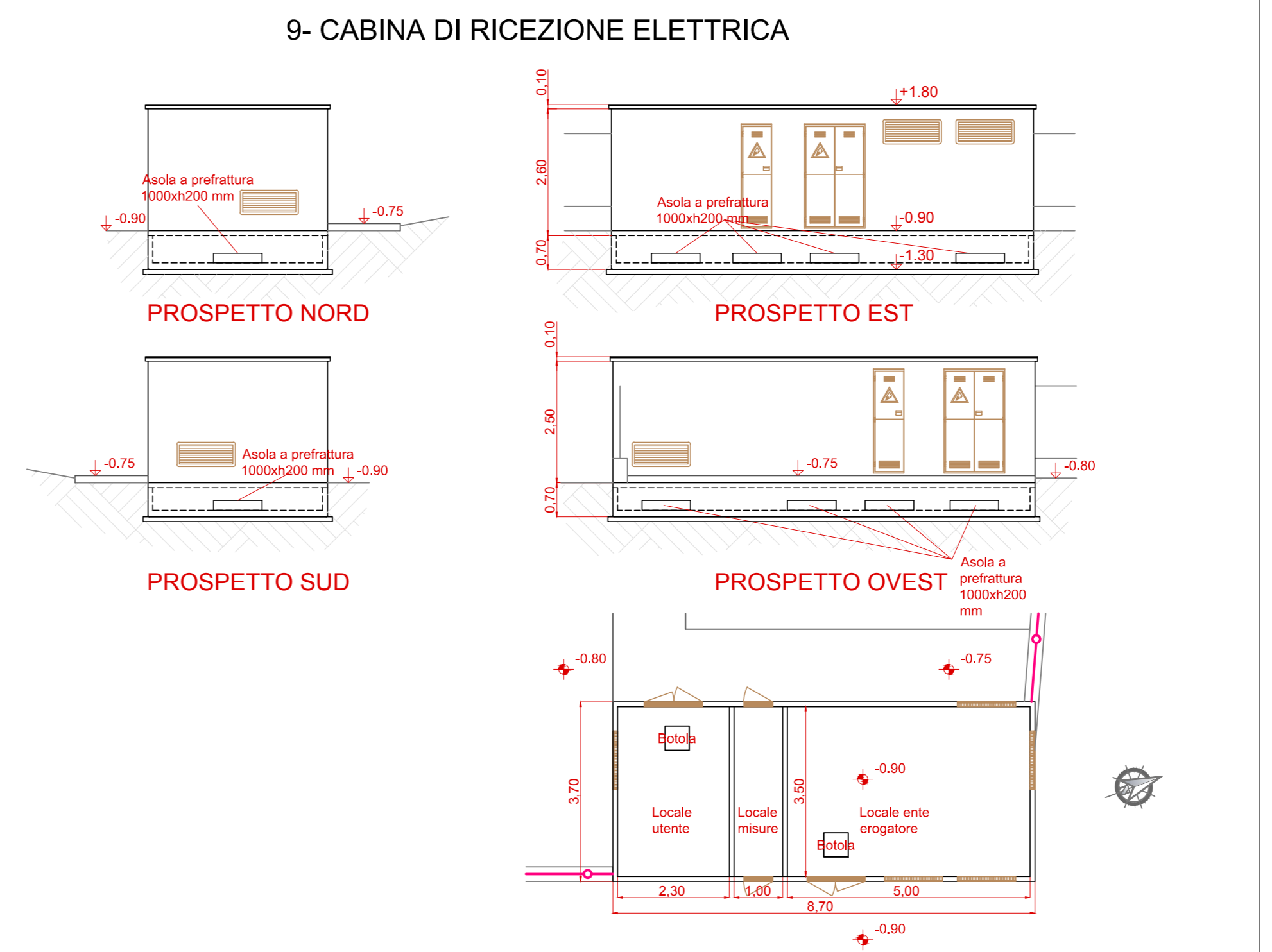
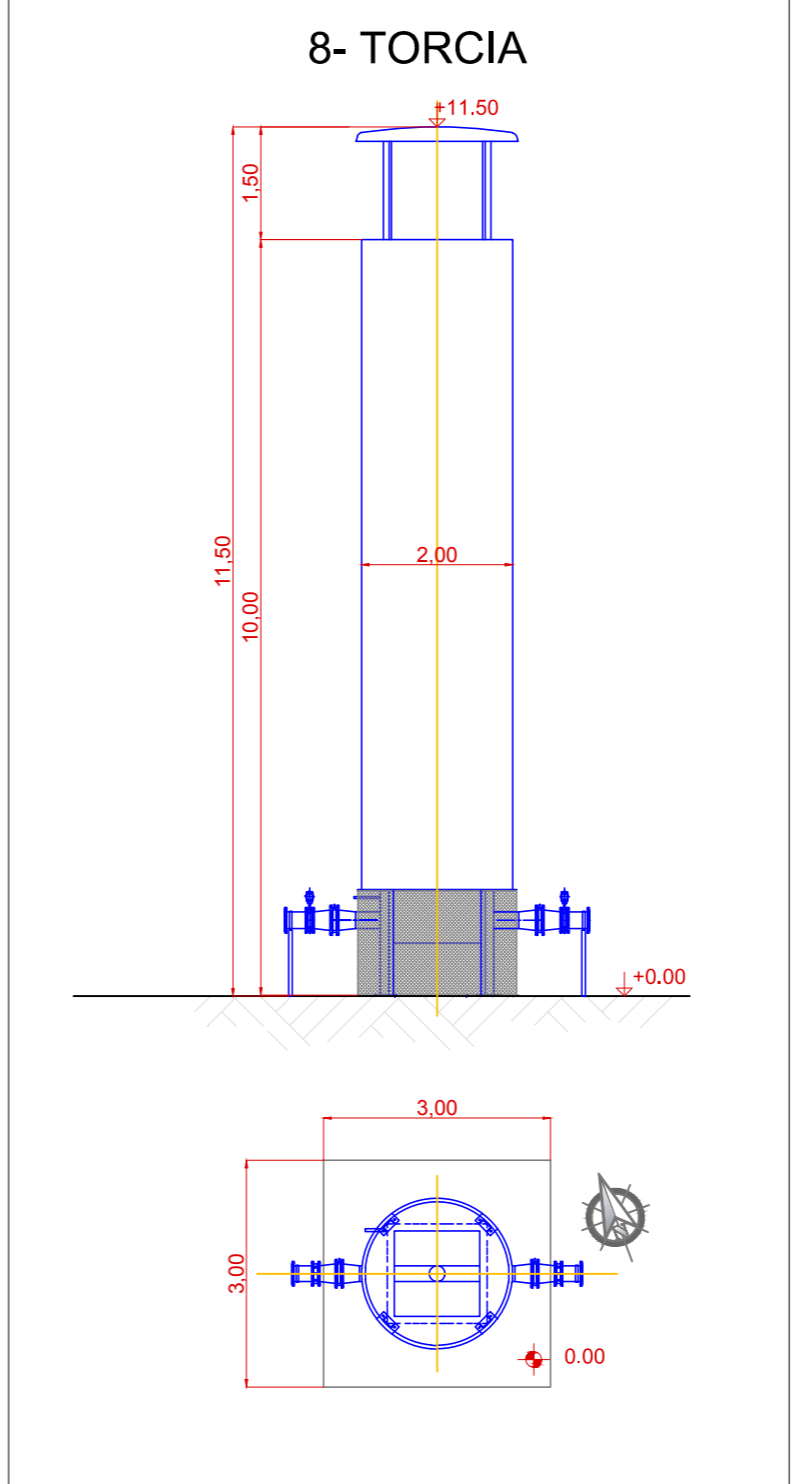
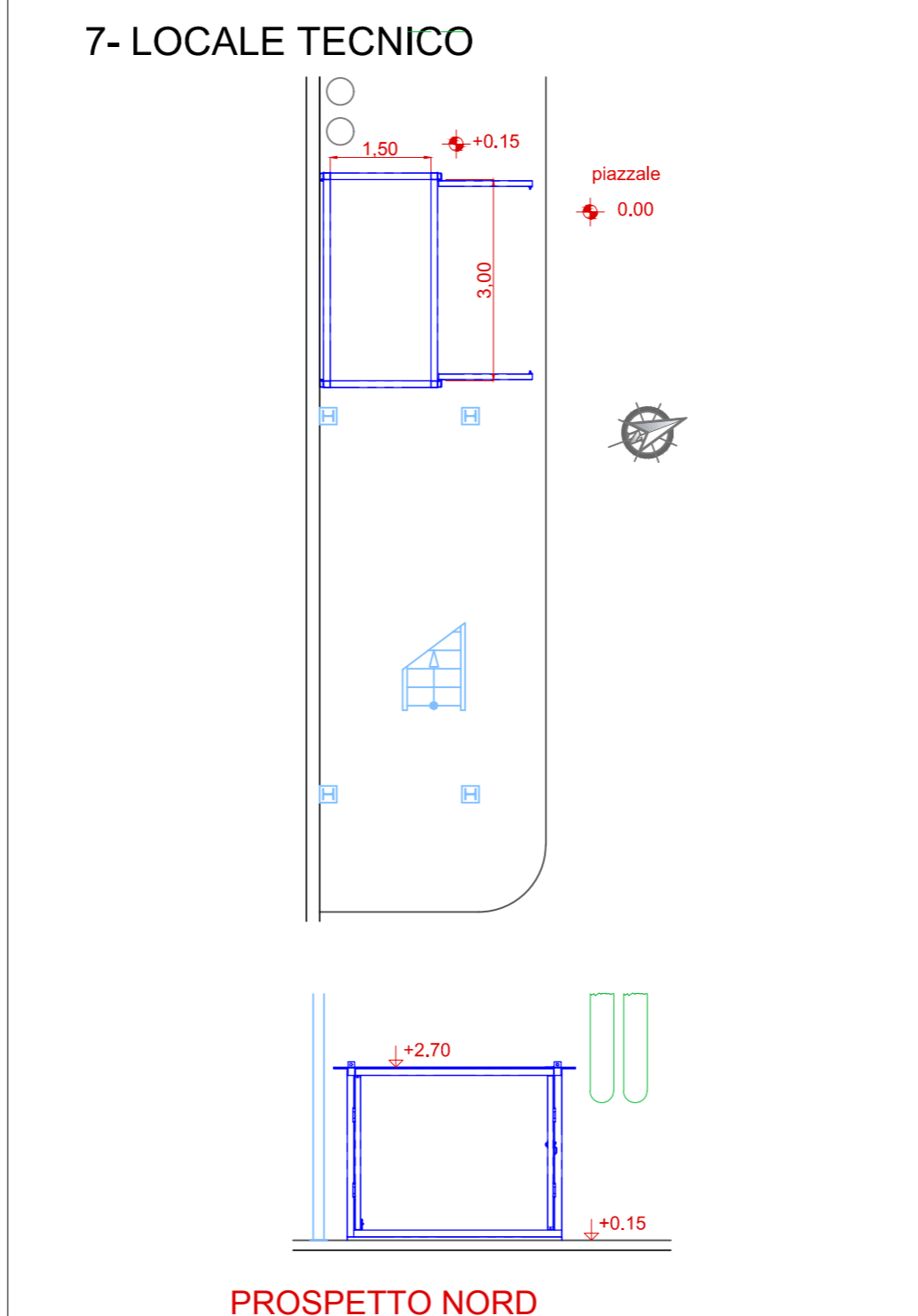
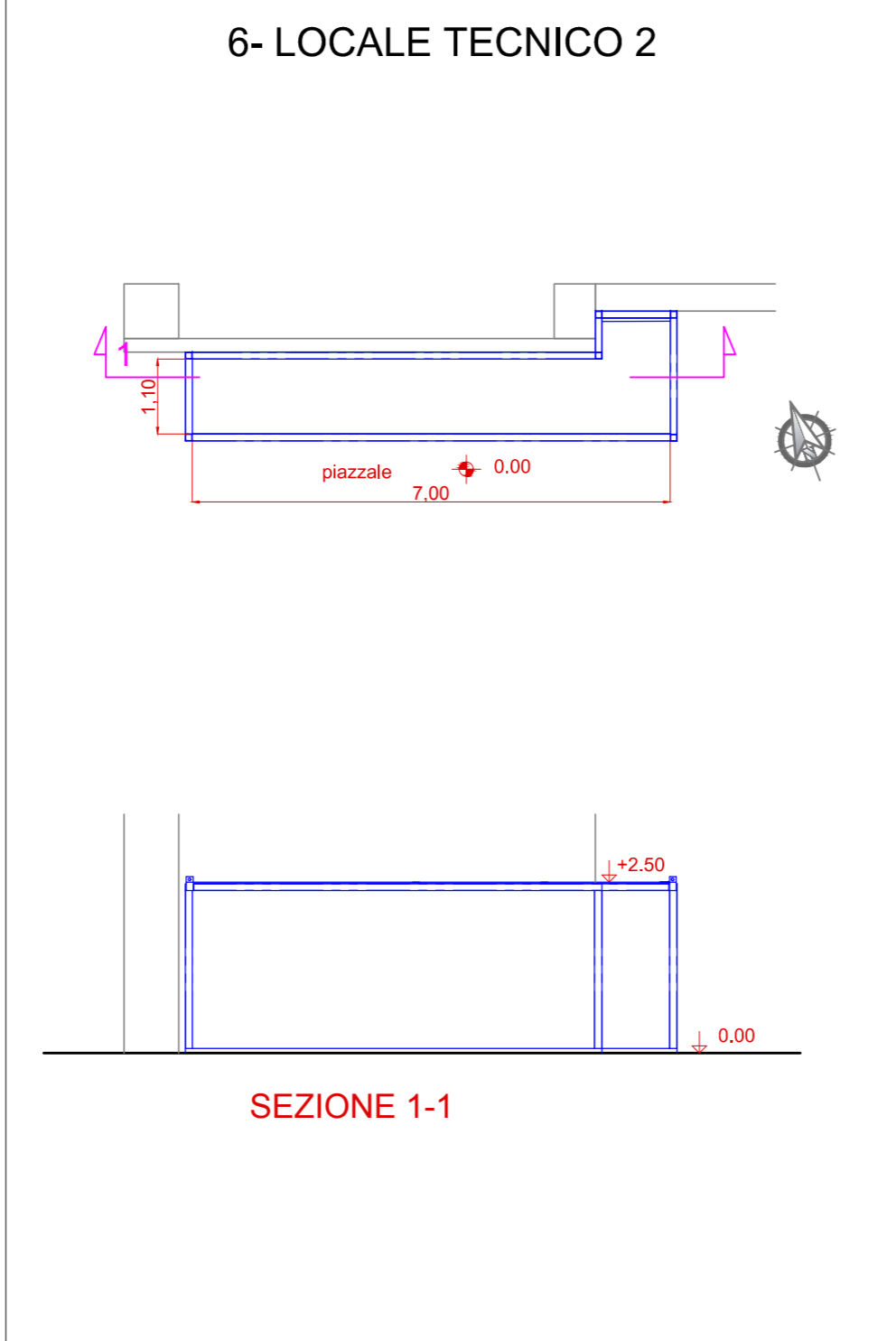
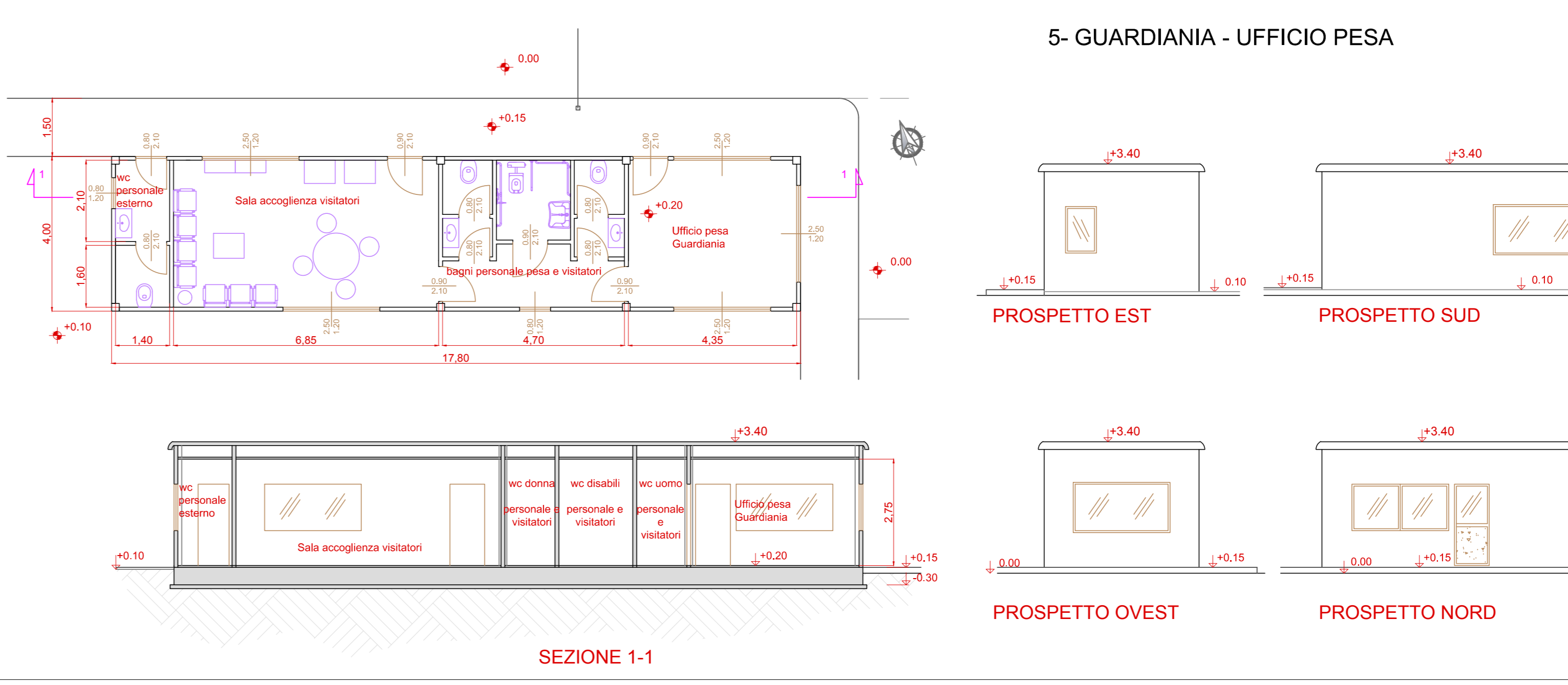
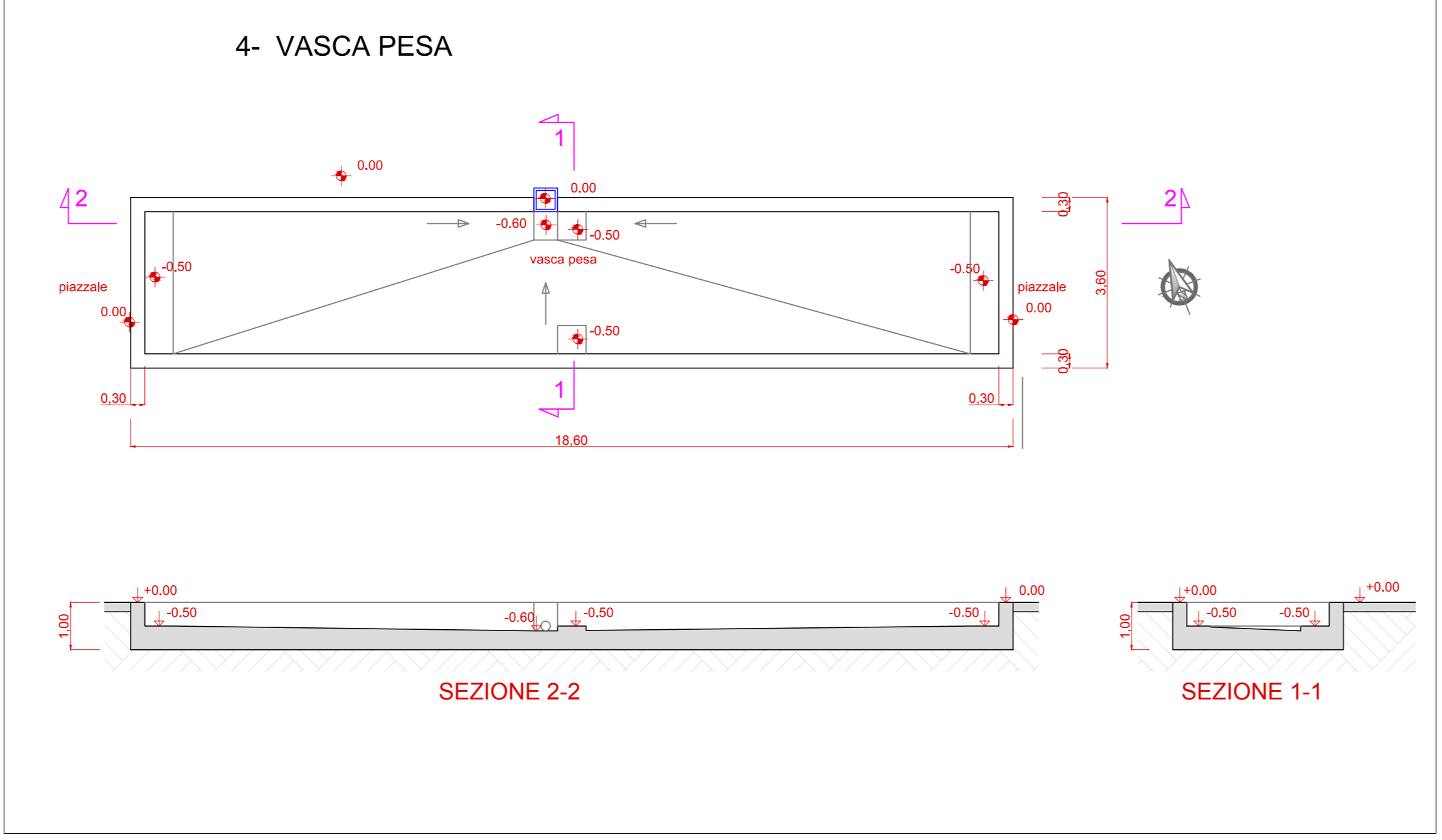
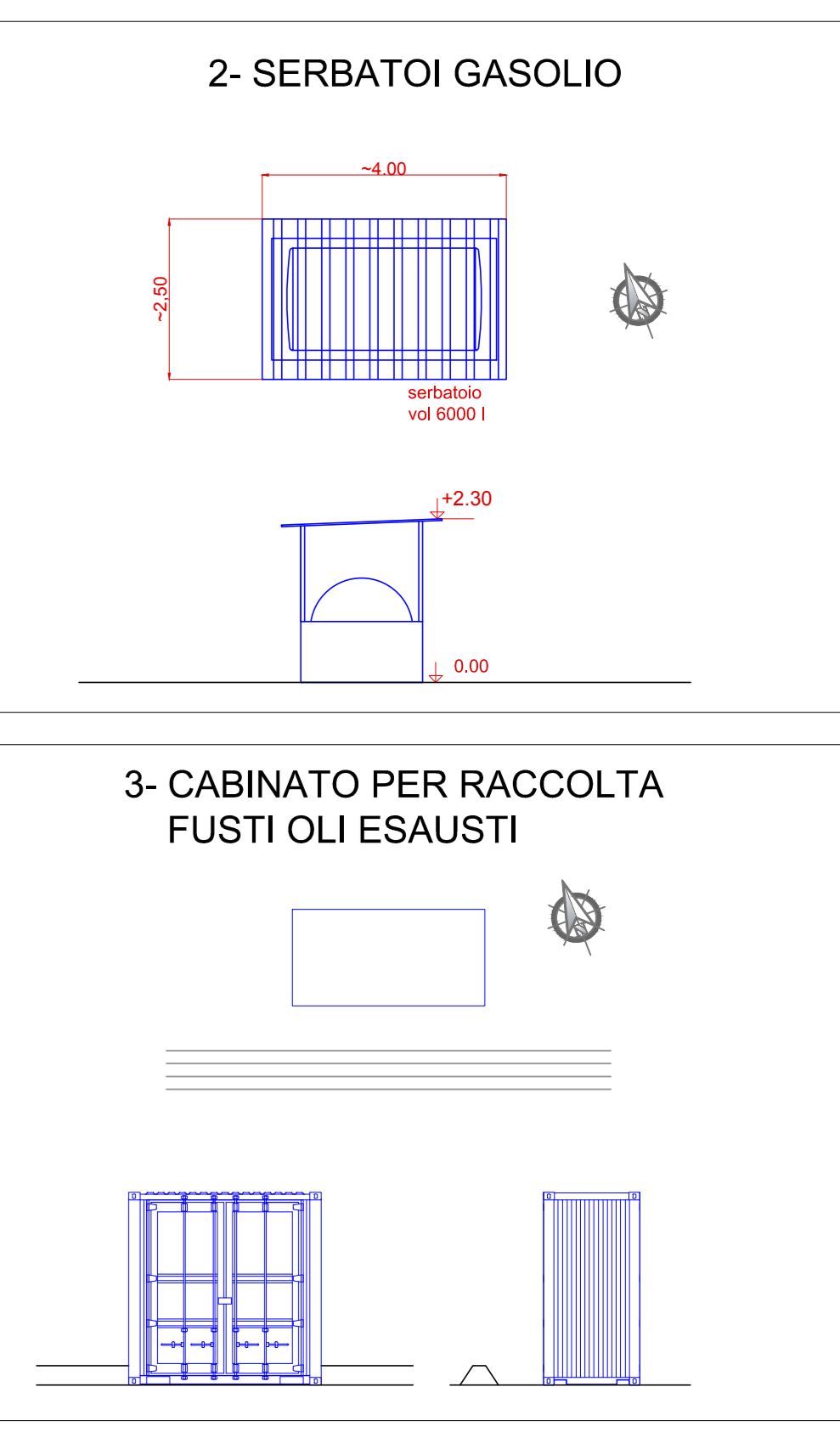
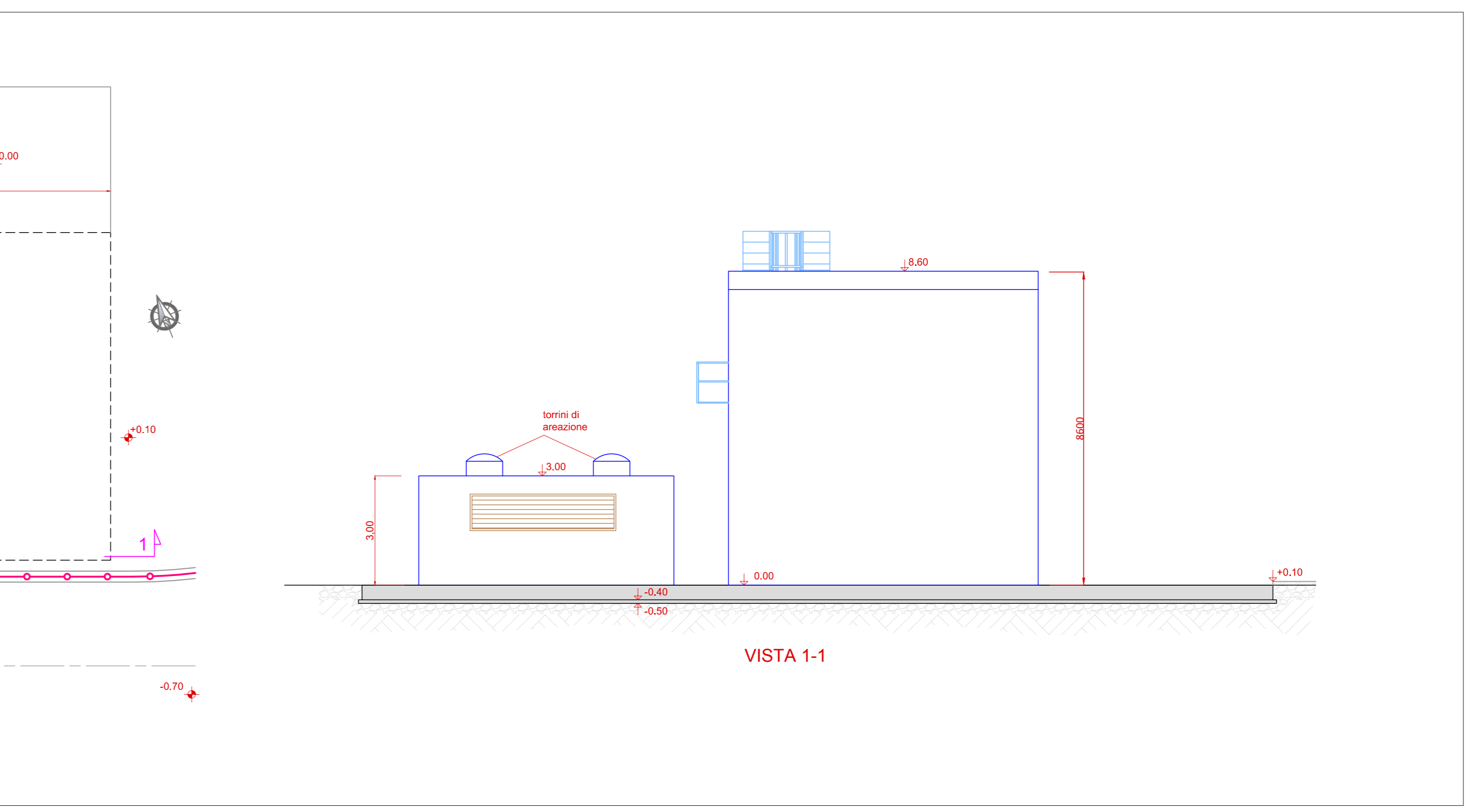
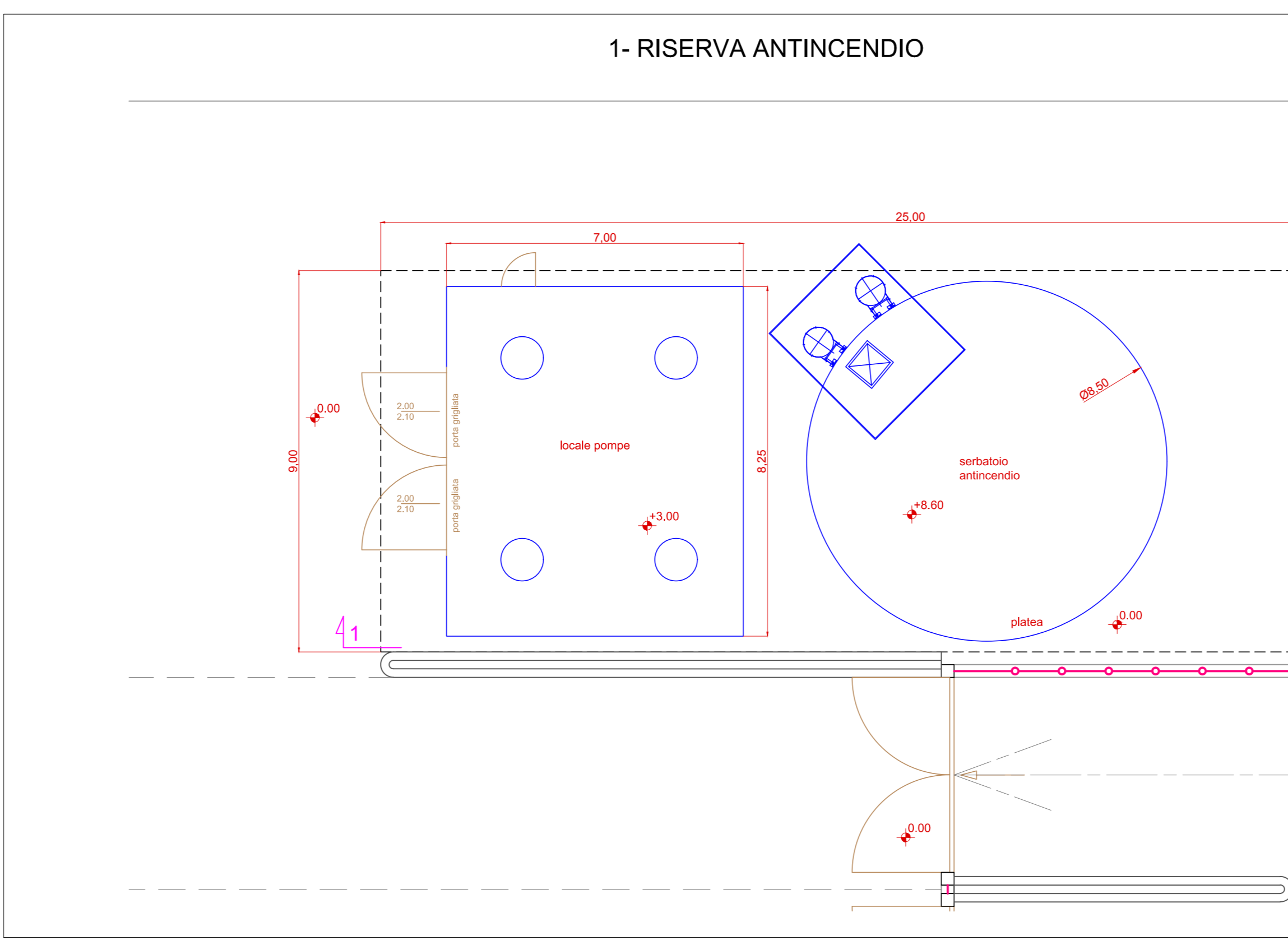


PIANTA CHIAVE



Numero documento interno: CAVP03-IS-A-A-2-00-R02

Titolo progetto: Nuovo impianto di trattamento e recupero della frazione organica da raccolta differenziata

Località Gerbido, Comune di Cavaglià (BI)

Opere accessorie: Piante, sezioni e prospetti

Verifica: P. Agostoni

Approvazione: L. Zaniboni

Progettista: A2A Ambiente S.p.A.

Numero tavola: **Tav 11**

Revisione: 02

Data: Aprile 2020

Scala grafica: 1:100

Scala piantaggio: 1:1

NB: La quota relativa di progetto 0,00 corrisponde alla quota assoluta +220,70 m